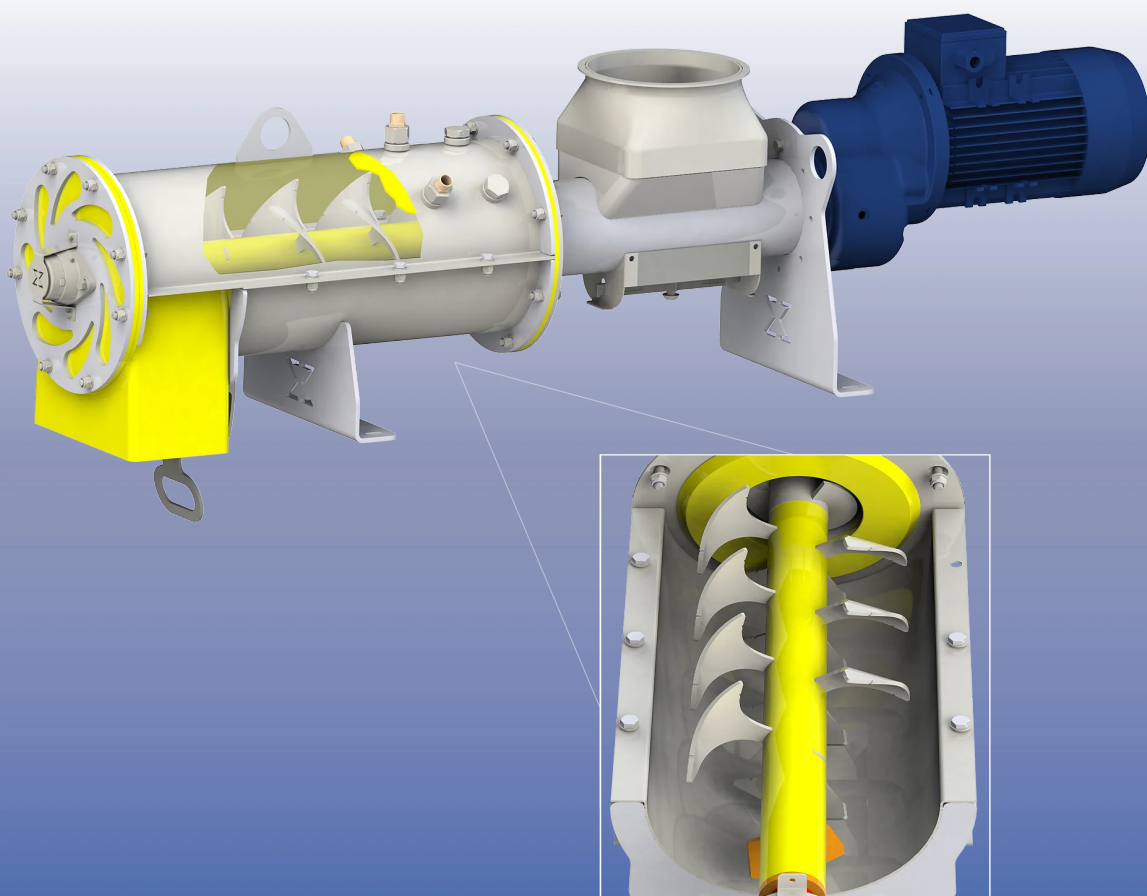


DUSTFIX®

Conditioners for Industrial Dusts



HIGHLY EFFICIENT DUST DISPOSALV

DUSTFIX® is the most economical, technologically advanced, easily installed machine for conditioning industrial dusts.

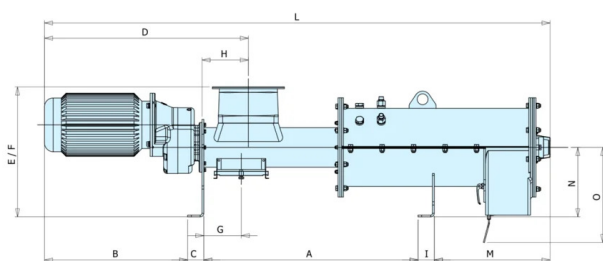
It can be used for a variety of industrial applications in various different sectors, whenever dusts need to be treated for recycling purposes, storage or disposal. Dustfix can be used for mixing different powder and liquid additives, creating dust-free products or aggregating powders.

DUSTFIX® is suitable for continuous duty thanks to its particular technical features, use of innovative SINT® engineering polymers and its particularly rapid work cycle.

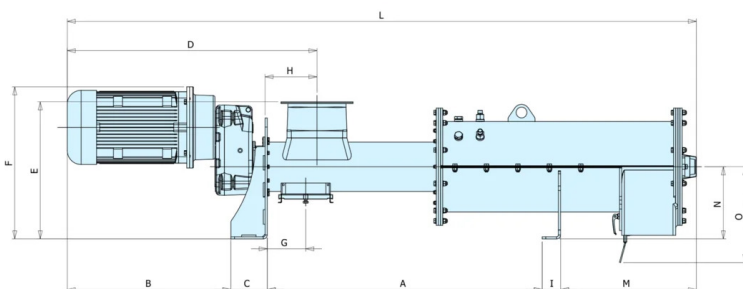
When it comes to operation and running economy, DUSTFIX® is the ideal machine for exhausting, conditioning and disposing of industrial dusts.

Overall Dimensions

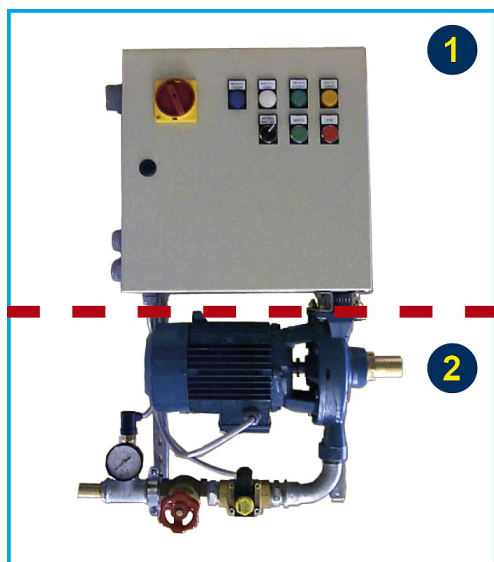
DUSTFIX® 20 / DUSTFIX® 40



DUSTFIX® 80



TYPE	m³/h	kW	kg	A (mm)	B (mm)	C (mm)	D (mm)	E (mm)	F (mm)	G (mm)	H (mm)	I (mm)	L (mm)	M (mm)	N (mm)	O (mm)
DUSTFIX 20	20	5.5	248	863	544	90	873	570	570	214	247	90	2,116	529	300	452
		7.5	256		584		913						2,156			
		9.2	263													
DUSTFIX 40	40	15	487	1,191	1,123	90	1,123	720	720	208	258	90	2,800	644	385	527
			540		1,133		1,133						2,810			
		22	784		1,262		1,262						3,371			
DUSTFIX 80	80	30	844	1,529	1,327	202	1,327	760	818	214	289	102	3,436	755	400	531
			878		1,388		1,388		843				3,497			
		37														



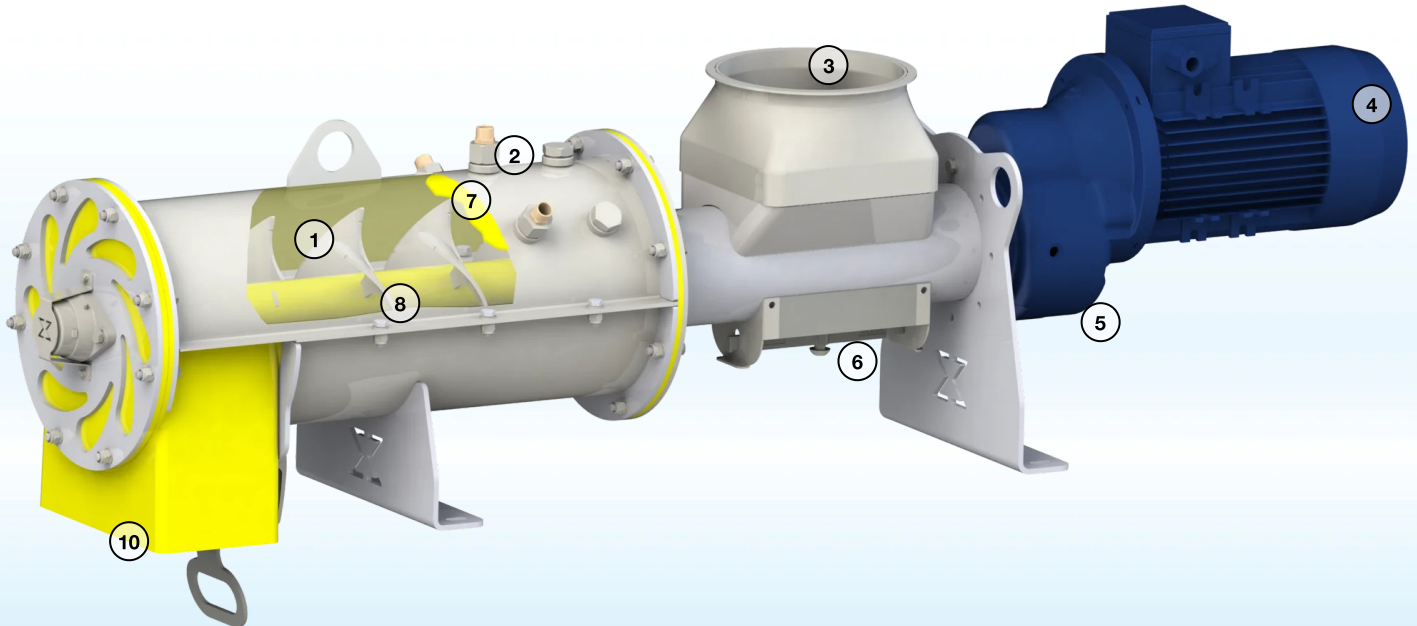
After initial adjustment in the manual mode, the electro-hydraulic panel controls the operation of DUSTFIX®, the water flow rate, work and hold cycles in a fully automatic way.

1 - Electric Panel

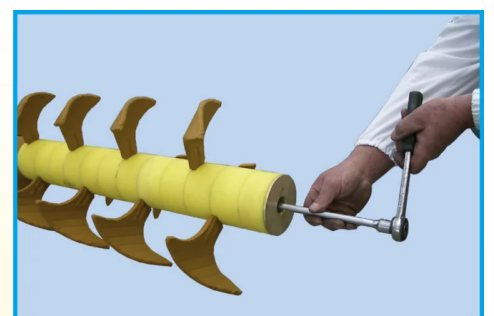
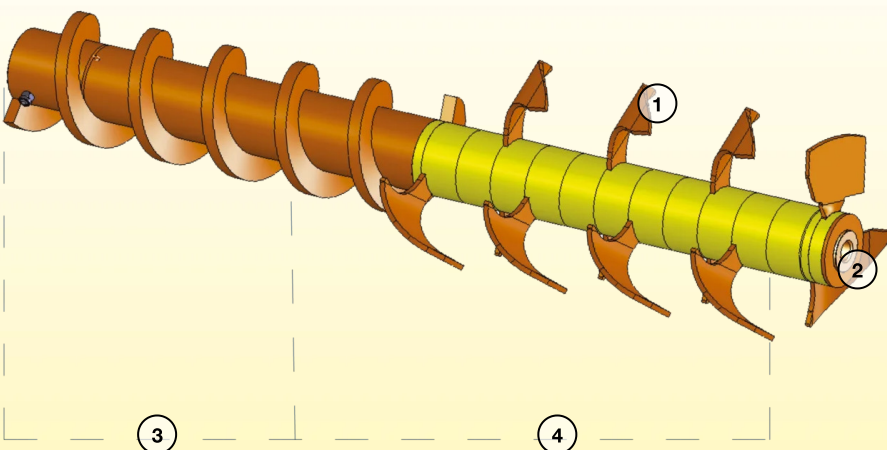
2 - Hydraulic Panel

Benefits

- ✓ **Attractive price**
- ✓ **Easy and quick installation**
- ✓ **No material residue**
- ✓ **Quick return on investment**
- ✓ **Minimum wear/very low maintenance cost**
- ✓ **Rotor completely removable and replaceable**



- | | | | |
|------------------------------------------------------|------------------------------------------------------------|-------------------------|----------------------------------------|
| 1 Non-stick, wear-resistant lining
ITALIAN PATENT | 2 Liquid inlet | 4 Electric motor | 5 Drive unit with built-in end bearing |
| 6 Inspection hatch for cleaning and maintenance | 7 Replaceable conditioning chamber in SINT® ITALIAN PATENT | 8 Specialized WAM Tools | |
| 10 Flexible outlet made of SINT® | | | |



- | | | | |
|--------------------------------------------------------|-----------|----------------|---------------------|
| 1 Steel tools with high-strength wear-resistant facing | 2 Scraper | 3 Feeding zone | 4 Conditioning zone |
|--------------------------------------------------------|-----------|----------------|---------------------|

Application



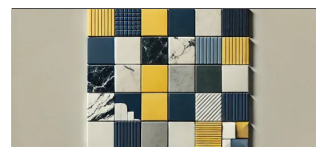
Foundries



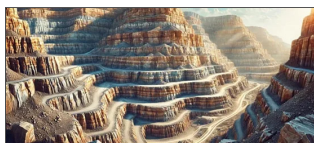
Asphalt recycling



Foundries, Iron & Steel Mills,
Coking Plants



Ceramics Production



Quarrying & Mining



Fertilizers Processing



Sludge Conditioning



Animal feed milling



WAM®



MAP®



TOREX®



EXTRAC®



WAM® AIR



WAM® VALVES



SILOFAB



SAVECO®



UNI EN ISO 9001
Certified Company

www.wamgroup.com